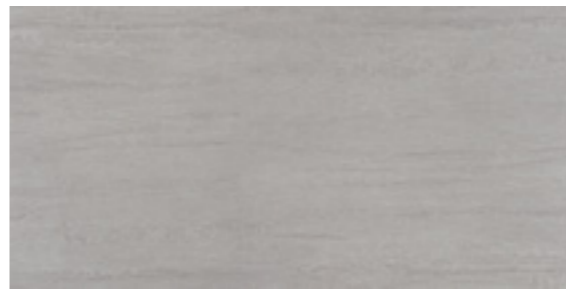




**kronos**

ermes  
aurelia

**36690**

45x90 PERLA rettificato

g20 | MQ

**36060**

60x60 PERLA naturale

e90 | MQ

**33500**

30x60 PERLA naturale

e50 | MQ

**36740**

45x90 PERLA semilevigato rettificato

g60 | MQ

**36052**

60x60 PERLA semilevigato rettificato

f90 | MQ

**33533**

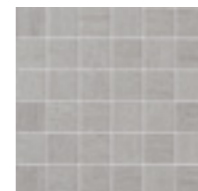
30x60 PERLA semilevigato rettificato

f40 | MQ

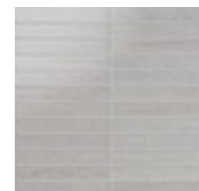
**81015**

1,5x60 matita ALLUMINIO

d20 | PZ

**52013**5x5 PERLA  
mosaico naturale

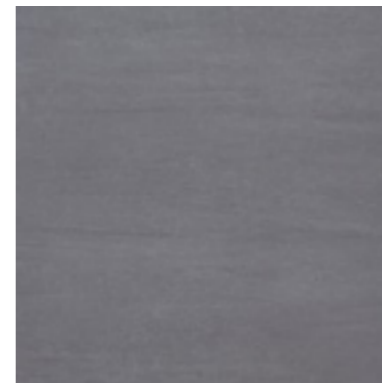
l25 | MQ

**52008**2.5x15 PERLA  
mosaico semilevigato

l25 | MQ



**36700** g20 | MQ  
45x90 FUMO rettificato



**36020** e90 | MQ  
60x60 FUMO naturale



**33510** e50 | MQ  
30x60 FUMO naturale



**36750** g60 | MQ  
45x90 FUMO semilevigato rettificato



**36053** f90 | MQ  
60x60 FUMO semilevigato rettificato



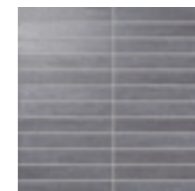
**33534** f40 | MQ  
30x60 FUMO semilevigato rettificato



**81015** d20 | PZ  
1,5x60 matita ALLUMINIO



**52014** l25 | MQ  
5x5 FUMO  
mosaico naturale

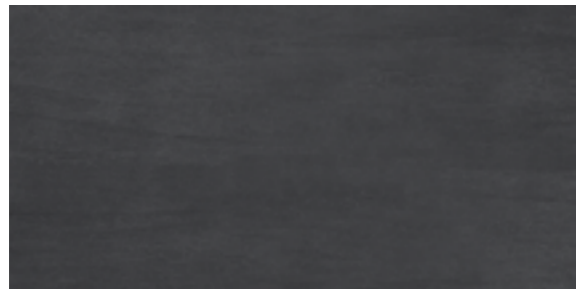


**52009** l25 | MQ  
2,5x15 FUMO  
mosaico semilevigato

GRES PORCELLANATO COLORATO IN MASSA . COLORBODY PORCELAIN STONWARE  
DURCHGEFÄRBTES FEINSTEINZEUG . GRÉS CÉRAMÉ COLORÉ DANS LA MASSE

| V3 |

nat. e rett. : | R10 | A+B | 0,76 dry . 0,62 wet |

**36720**

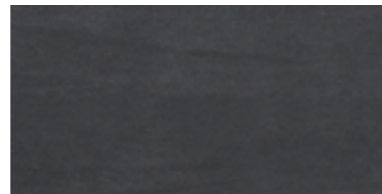
45x90 NERO rettificato

g20 | MQ

**36050**

60x60 NERO naturale

e90 | MQ

**33530**

30x60 NERO naturale

e50 | MQ

**36770**

45x90 NERO semilevigato rettificato

g60 | MQ

**36055**

60x60 NERO semilevigato rettificato

f90 | MQ

**33536**

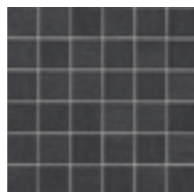
30x60 NERO semilevigato rettificato

f40 | MQ

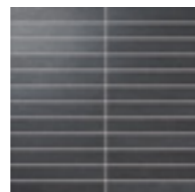
**81015**

1,5x60 matita ALLUMINIO

d20 | PZ

**52016**5x5 NERO  
mosaico naturale

l25 | MQ

**52011**2,5x1,5 NERO  
mosaico semilevigato

l25 | MQ

**36680**

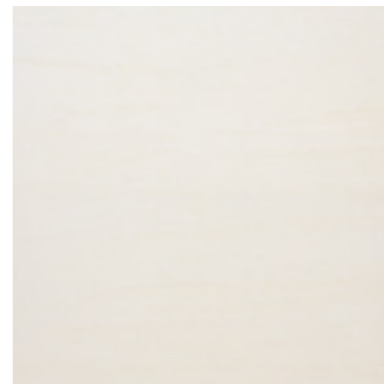
45x90 AVORIO rettificato

g20 | MQ

**36730**

45x90 AVORIO semilevigato rettificato

g60 | MQ

**36000**

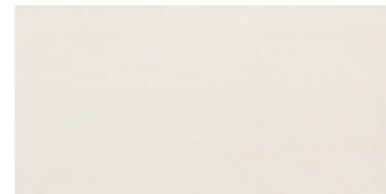
60x60 AVORIO naturale

e90 | MQ

**36051**

60x60 AVORIO semilevigato rettificato

f90 | MQ

**33490**

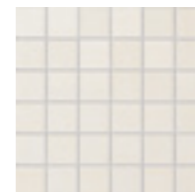
30x60 AVORIO naturale

e50 | MQ

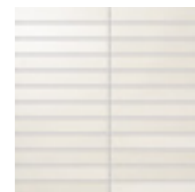
**33532**

30x60 AVORIO semilevigato rettificato

f40 | MQ

**52012**5x5 AVORIO  
mosaico naturale

l25 | MQ

**52007**2,5x1,5 AVORIO  
mosaico semilevigato

l25 | MQ

GRES PORCELLANATO COLORATO IN MASSA . COLORBODY PORCELAIN STONWARE  
DURCHGEFÄRBTES FEINSTEINZEUG . GRÉS CÉRAMÉ COLORÉ DANS LA MASSE

| V3 |















nat. e rett. : | R10 | A+B | 0,76 dry . 0,62 wet |

GRES PORCELLANATO COLORATO IN MASSA . COLORBODY PORCELAIN STONWARE  
DURCHGEFÄRBTES FEINSTEINZEUG . GRÉS CÉRAMÉ COLORÉ DANS LA MASSE

| V3 |  
nat. e rett. : | R10 | A+B | 0,76 dry . 0,62 wet |

PEZZI SPECIALI SPECIAL ITEMS FORMSTÜCKE PIÈCES SPÉCIALES	battiscopa 8,5x60	battiscopa semilevigato 8,5x60
	b10   PZ	b80   PZ
AVORIO	58016	58016/L
PERLA	58017	58017/L
FUMO	58018	58018/L
NERO	58021	58021/L

IMBALLI E PESI PACKING - WEIGHTS VERPACKUNG - GEWICHT EMBALLAGES - POIDS	BOX				PALLET		
	mm	pcs	m <sup>2</sup>	kg	box	m <sup>2</sup>	kg
45x90	11	2	0,81	20,50	40	32,40	820
60x60	9,5	3	1,08	24,25	40	43,20	970
60x60 semilevigato rett.	9,5	3	1,08	23,00	40	43,20	920
30x60	9,5	6	1,08	22,30	48	51,84	1.070
30x60 semilevigato rett.	9,5	6	1,08	21,00	48	51,84	1.008
2,5x15 semilevigato	9,5	11	1,00	19,50	-	-	-
5x5 mosaico	9,5	13	-	24,00	-	-	-
1,5x60	7,0	16	-	2,60	-	-	-

 Classificazione secondo norme CEN gruppo B1a UNI EN 14411 App. G - UGL Classification in accordance with CEN standards B1a UNI EN 14411 App. G - UGL Klassifizierung gemäß CEN Normen Gruppe B1a UNI EN 14411 App. G - UGL Classification selon les normes CEN groupe B1a UNI EN 14411 App. G - UGL				
ermes aurelia	Proprietà fisico-chimiche Physical-chemical properties Physik-chemische Eigenschaften Propriétés physico-chimiques	Tipo di prova Standard of test Testnorm Norme du test	Valore prescritto Required value Vorgeschriebener Wert Valeur prescrite	Valore Ermes Aurelia Ermes Aurelia standards Ergebnis Ermes Aurelia Valeur Ermes Aurelia
	Lunghezza e larghezza Length and width Länge und Breite Longueur et largeur	UNI EN ISO 10545.2	± 0,6%	Conforme In accordance Erfüllt Conforme
	Ortogonalità Wedging Rechtwinkligkeit Orthogonalité	UNI EN ISO 10545.2	± 0,6%	Conforme In accordance Erfüllt Conforme
	Spessore Thickness Stärke Épaisseur	UNI EN ISO 10545.2	± 5%	Conforme In accordance Erfüllt Conforme
	Planità Warpage Ebenförmigkeit Planéité	UNI EN ISO 10545.2	± 0,5%	Conforme In accordance Erfüllt Conforme
	Rettilineità spigoli Linearity Kantenegeradheit Rectitude des arêtes	UNI EN ISO 10545.2	± 0,5%	Conforme In accordance Erfüllt Conforme
	Assorbimento d'acqua Water Absorption Wasseraufnahme Absorption d'eau	UNI EN ISO 10545.3	≤ 0,5%	Conforme In accordance Erfüllt Conforme
	Coefficiente di dilatazione termica lineare Coefficient of linear thermal-expansion Lineare Wärmeausdehnung Coefficient linéaire de dilatation thermique	UNI EN ISO 10545.8	-	7MK <sup>-1</sup>
	Resistenza a flessione Flexion Resistance Biegezugfestigkeit Résistance à la flexion	UNI EN ISO 10545.4	≥ 35 N/mm <sup>2</sup>	Conforme In accordance Erfüllt Conforme
	Resistente agli sbalzi termici Thermal shock resistance Temperaturwechselbeständigkeit Résistance aux écarts de température	UNI EN ISO 10545.9	Richiesto Required Requis Erforderlich	Resistente Resistant Résistants Widerstandsfähig
	Resistenza al gelo Frost resistance Frostwiderstandsfähigkeit Résistance au gel	UNI EN ISO 10545.12	Richiesto Required Requis Erforderlich	Resistente Resistant Résistants Widerstandsfähig
	Resistenza allo scivolamento Slip resistance Rutschfestigkeit Résistance à la glissance	DIN 51130  ASTM C1028	USA test 	Indicata sul catalogo Indicated on the catalogue Im prospekt angegeben Indique sur le catalogue  Indicata sul catalogo Indicated on the catalogue Im prospekt angegeben Indique sur le catalogue
	Resistenza all'abrasione profonda (volume rimosso in mm <sup>3</sup> ) Deep abrasion resistance (removed volume in cu.mm.) Tiefenverschleißbeständigkeit (abgetragenes Volumen in mm <sup>3</sup> ) Résistance à l'abrasion profonde (volume enlevé en mm <sup>3</sup> )	UNI EN ISO 10545.6	<175 mm <sup>3</sup>	Conforme In accordance Erfüllt Conforme

# ermes aurelia

**ermesceramiche**spa

via statale 467, n.171 - 42013 veggia (re) - italy

tel. +39 0536 991511 - fax +39 0536 824777

e-mail: [info@ermes-ceramiche.it](mailto:info@ermes-ceramiche.it)

[www.ermes-ceramiche.it](http://www.ermes-ceramiche.it)